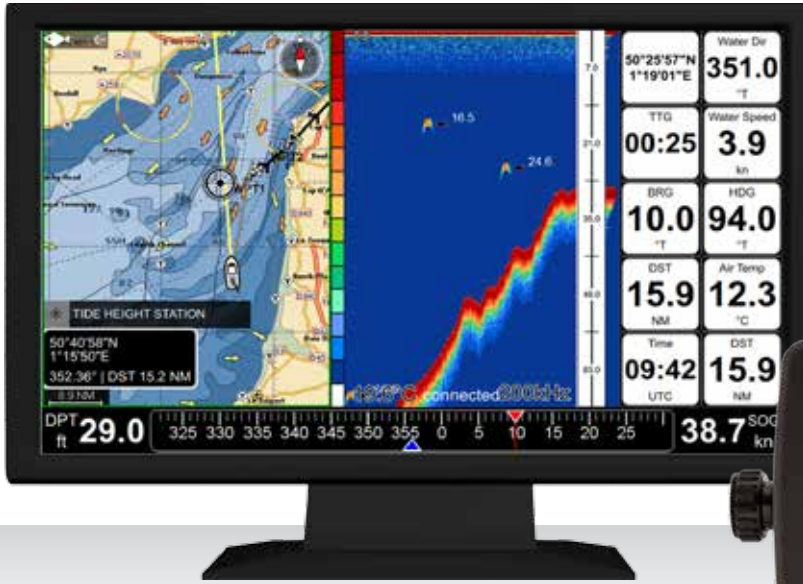


Display not included



EXPLORER 23



EXPLORER 23 chartplotter + multi-function controller is the perfect mate for the professional fishermen or for high-tech dashboard lovers. Control on any HDMI display:

- **Chartplotter**
- **Fish finder***
- **Any connected NMEA0183 and NMEA2000 compatible device*** such as AIS, autopilot, engine, etc.

Tough and reliable

The **back-lit keyboard** is easy to use even with gloves and in any condition. The optional remote control gives an extra hand, for example to quickly save marks during your activity.

HDMI Video output

EXPLORER 23 is compatible with any HDMI display to provide an HD resolution experience!

NMEA0183 & 2000

EXPLORER 23 is extremely versatile as it comes with two NMEA0183 serial ports and one NMEA2000 port to connect any compatible device such as AIS, autopilot, engine, etc.

Configure your desired view

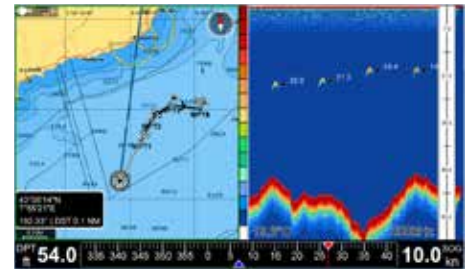
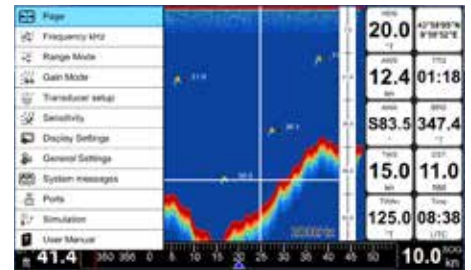
Beside choosing any display size, you can also configure the multi-vision layout with fish finder, map and data boxes: full page or split page, with no data, one or two rows of data.

Customize the function keys

With EXPLORER 23, you can configure the four functional keys with your desired function shortcuts, for the top used commands.

Never miss a thing

Browse the **Fish Finder history** up to 5 minutes (when connected to a fish finder) and, if you find anything interesting, place a mark on it! With the **Cursor Box** smart function, point the cursor on map to instantly view distance and bearing.



* Not included



TECHNICAL SPECIFICATIONS

- Dimension: 172.5 x 106.5 x 84.4 mm (6.8" x 4.2" x 3.3") with holder
- Weight: 350 g
- Compatible with any HDMI display
- Power consumption: 1.2W typical
- Supply Voltage: 10-35 Vdc
- Cartridge slot: 1 x micro SD Card (not included)
- Back-lit keyboard
- Integrated remote control receiver (radio IF 2.4 Ghz)
- Waterproof IPx6
- Storage temperature: -20 °C +80 °C / Operating temperature: -20 °C +60°C
- Connectors:
 - 1x Supply and data cable: 2 NMEA0183 ports + external alarm
 - 1x NMEA2000
 - 1x GPS: 6 pins (powered 10-35 Vdc)
 - 1x Built-in HDMI video input cable

SOFTWARE FEATURES

- 4 fully configurable functional keys
- Multi-vision configurable layout with fish finder, map and data boxes
- Full menu on Map
- Navigation functions: Go To, Add Waypoints, Marks, MOB, Easy routing
- Route management
- Tracks recording and management
- Customizable data boxes
- Cursor Box showing distance and bearing of cursor location
- Customizable ship profile
- Simulation mode
- Grounding alarm
- AIS compatible
- Seiwa Black Box Fish finder compatible
- Fish finder history up to 5 minutes (when connected to a fish finder)
- Engine control page (when connected to an engine)

CONTENTS OF THE BOX

- EXPLORER 23 with built-in HDMI cable
- Metal mount with screws
- Power supply and data cable

SEIWA CO LTD Marine Electronics
Flat 905-6, 9/F
Fook Yip BLDG n. 53-57
Kwai Fung Crescent,
Kwai Chung, N.T. Hong Kong

ACCESSORIES



Seiwa RC45
Remote Control



Seiwa BBFF
Fish Finder



Seiwa m8-28
GPS receiver

European Distributor:
AvMap s.r.l. a socio unico
V.le Zaccagna, 6 54033
Carrara (MS) Italy
P. IVA 006102330450

orders@seiwadirect.com