

# WELCOME



**ALPHATRON**

The human touch in technology

**ALPHATRON MARINE IS SPECIALIZED  
IN THE FOLLOWING AREAS:**

**ALPHATRON**  
marine

# ALPHATRON MARINE COMMUNICATION



- TELEPHONE EXCHANGE (PABX)
- PUBLIC ADDRESS SYSTEMS (PAGA)
- UHF / WIRELESS SOLUTIONS
- TALKBACK / INTERCOM
- FIRE DETECTION SYSTEM
- SATELLITE COMMUNICATION
- AIRTIME

# Alphaconnect

The Alphaconnect is a DNV type approved marine telephone- and talkback system. It is a 2-wired system, making it a cost efficient system for installation as well as an ideal system for retrofit.

The Alphaconnect can be delivered in an enclosed box (Alphaconnect 48 and 128) and in a 19" rack mount version (Alphaconnect 128 and 256)





# Alphaconnect

## System description:

- Integrated telephone and talkback system
- Available in max 48, 128 or 256 internal lines
- Standard 2 trunklines for Satcom/GSM/PAGA connections (extendable)
- 24 VDC main and back-up power
- Integrated 60W PA amplifier optional

# Alphaconnect telephone stations



**P411**

Flushmounted telephone  
For wheelhouse and ECR



**P220**

IP 65 heavy duty telephone  
For engine room, thruster  
rooms and outside use



**P421**

IP 65 heavy duty telephone  
With handsfree function  
and hornspeaker function



# Alphaconnect telephone stations



## TX500

Cabin station with magnetized handset for wall mounting.



## TX251

Cabin station with display, phonebook and hands-free function. Magnetized handset for wall mounting.



## P210 talkback

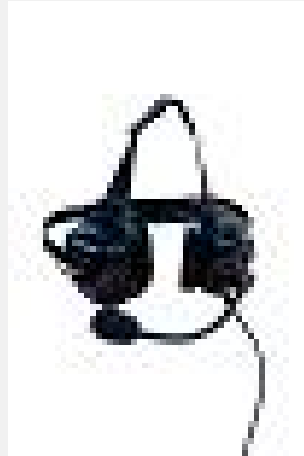
IP 65 talkback station  
With headset and  
hornspeaker connection

# Alphaconnect options and accessories



## PA amplifier

Integrated 60W amplifier card



## Headset

Noise-cancelling headset with 10m cable



## Call Data Manager

Software key to charge external telephone calls to crew



# AlphaAnnounce Digital

The AlphaAnnounce is a combined Public Address and General Alarm system, eliminating the need for a separate bells system. The system is tested and certified according to the stringent EN54-16 norm and fulfills IMO/SOLAS/Modu code rules and regulations. DNV type approval process pending.



# AlphaAnnounce Digital

## System description:

- Standard 2\*320W digital amplifier (extendable)
- A/B loop system or dual rack redundant A/B system
- Interface to fire & gas detection, Alarm Monitoring system, telephone exchange etc.
- Digital line guard modules
- According to IMO rules and IEC60945

# AlphaAnnounce Control Panel

Panel with dimmable illuminated keys, gooseneck microphone, 4 alarm buttons, 4 zone selection buttons, error status indication and PTT button.

Protected against accidental use, alarm buttons need to be pressed 2 seconds.

Optional 4 button extension board available.











**ALPHATRON**

**JRC**

**ALPHATRON**

**JRC**

PERFORMANCE MONITOR  
#300 541-41  
JRC



# ALPHATRON PRODUCTS

ALPHATRON MARINE HAS ITS OWN RESEARCH & DEVELOPMENT DEPARTMENT FOR PRODUCTS COMPLEMENTARY TO THE ALREADY EXISTING PRODUCTS IN OUR PROGRAM.

- ALPHABRIDGE MODULAR BRIDGE CONSOLES
- (MULTI) GYRO COMPASS SYSTEMS
- REPEATER INSTRUMENTS
- AUTO PILOTS FOR SEA & RIVER
- RADAR SYSTEMS
- TELEPHONE EXCHANGE, PUBLIC ANNOUNCE
- ECDIS AND CONNING SYSTEMS
- RUDDER INDICATOR SYSTEMS
- MULTI FUNCTION CONTROL PANELS
- ALARM & MONITORING SYSTEMS
- ALL-IN-1 DATA, COMMUNICATION AND ENTERTAINMENT SYSTEMS



# GYRO COMPASS ALPHAMINICOURSE

- MAINTENANCE FREE
- SMALL SIZE AND VERSATILE
- DIMENSIONS ARE; 288 MM (H) x 240 MM (L) x 329 MM
- WEIGHT IS 12,5 KG.

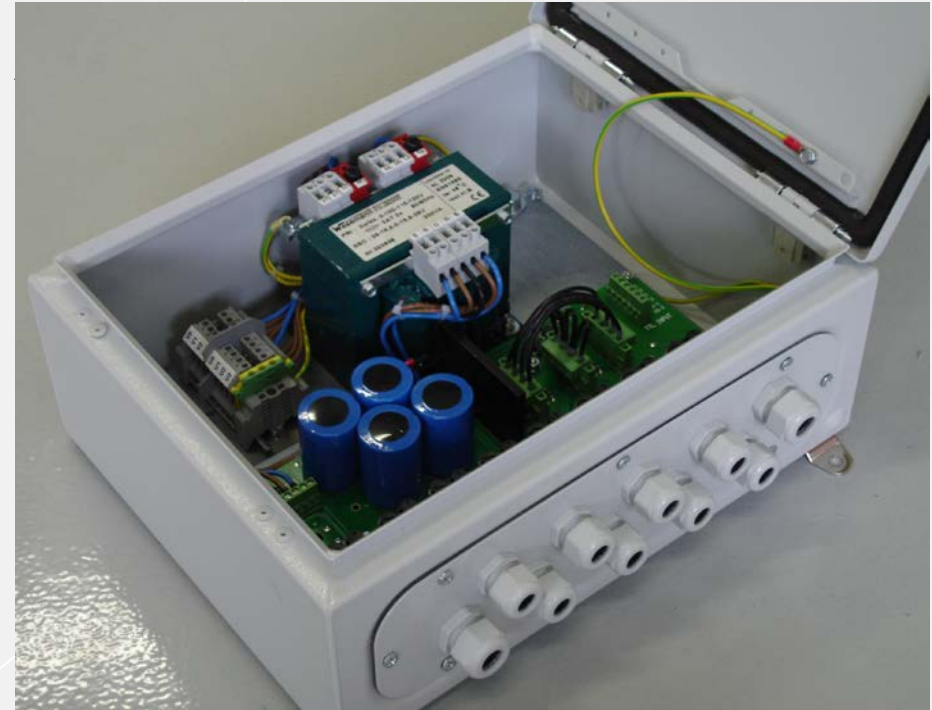




# ALPHAMINICOURSE COMPONENTS

## ALPHASTEP STEPPER AMPLIFIER

- SUPPLY VOLTAGE: 100VAC, 110VAC, 220VAC EN 230VAC
- OUTPUT VOLTAGE: 70VDC / 35VDC OF 50VDC 25VDC
- POWER: 140W
- RIPPLE: 2%
- THREE TTL CONTROLLABLE OUTPUTS WITH GALVANIC ISOLATION.
- POSITIVE OR NEGATIVE SWITCHING OUTPUT.



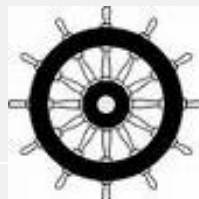
# ALPHATRON ANALOG RUDDER ANGLE INDICATORS



ALPHARUDDER XL-96

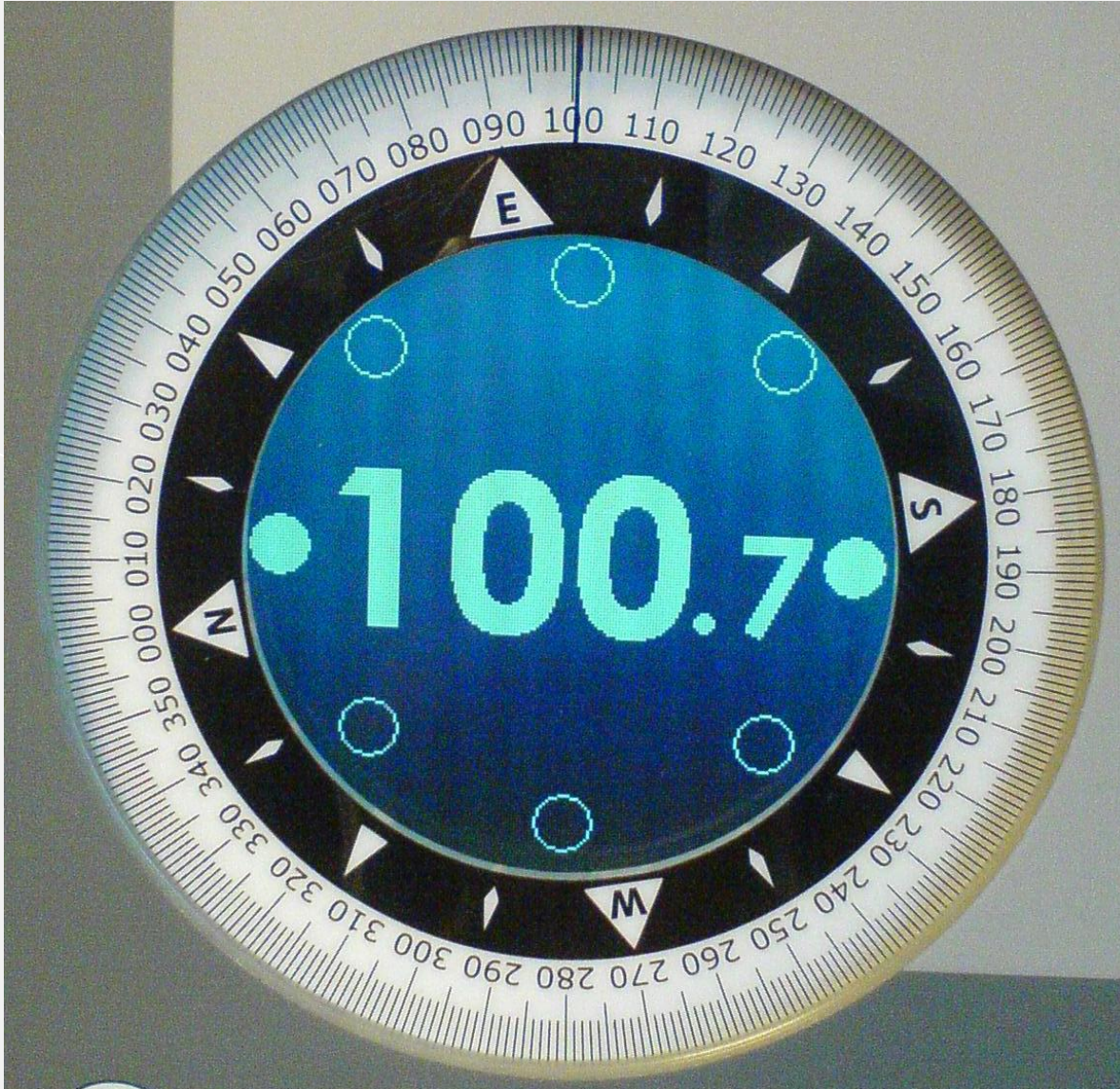


ALPHARUDDER TRI-2



The human touch in technology

## ALPHATRON MF LINE:



AN IN HOUSE DEVELOPED NEW LINE OF ANALOGUE REPEATERS WITH DIGITAL READING.

**ALPHATRON**  
marine







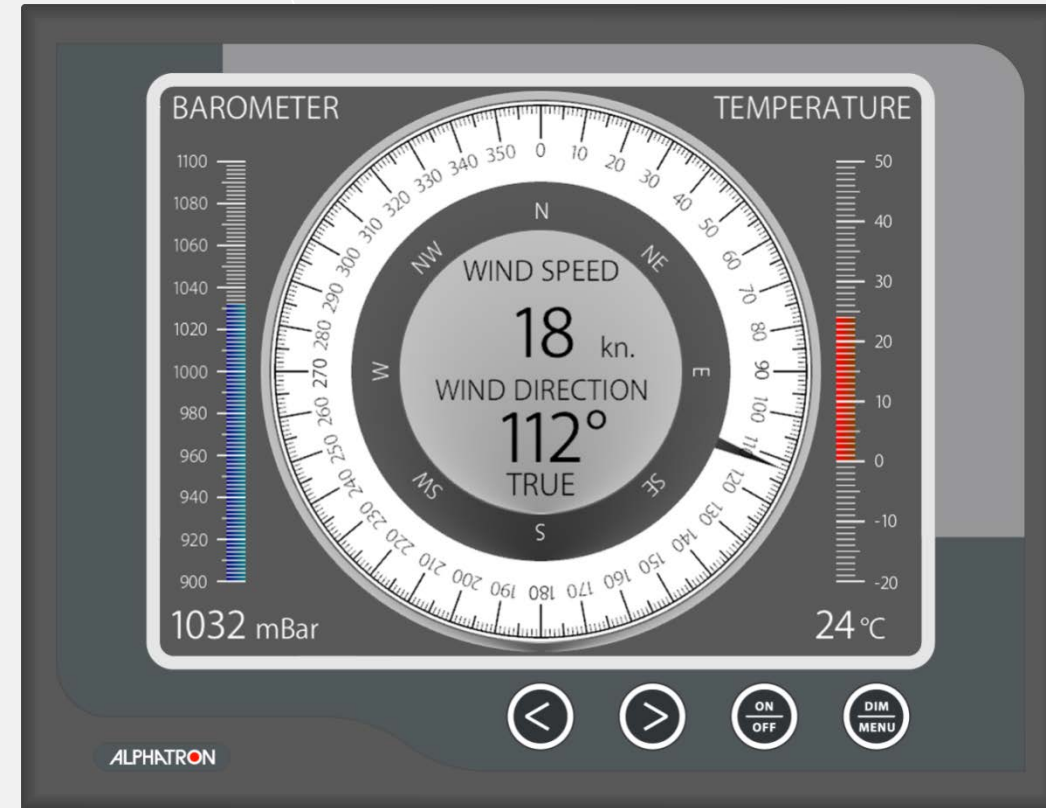
# ALPHALINE TOUCH PANEL MFC

TO BE USED AS A DISPLAY OR CONTROL UNIT.

POSSIBLE APPLICATIONS:

- INDICATION OF NAVIGATIONAL INFORMATION LIKE COURSE/HEADING, WIND DIRECTION AND SPEED, RATE OF TURN, RUDDER ANGLE, AND DEPTH
- INDICATION OF CONNING AND OR SPEED DOCKING INFORMATION
- PA MASTER CONTROL UNIT
- DECK AND NAVIGATION LIGHT CONTROL UNIT
- WINDOW WIPER CONTROL UNIT
- DISPLAYING OF CCTV IMAGES

8,4 inch high brightness TFT screen



The human touch in technology

# ALPHAMULTICOURSE MFC

JOYSTICK AUTOPILOT:



**ALPHATRON**  
marine

The human touch in technology

# ALPHASEAPILOT MFC

THE ALPHASEAPILOT MFC IS ADAPTIVE TO SPEED AND IS DEVELOPED FOR SINGLE RUDDER VESSELS



**ALPHATRON**  
marine

# ALPHASEAPILOT MFA

IF THE VESSEL HAS DUAL, INDEPENDENT RUDDERS OR IF MORE ADVANCED POSSIBILITIES ARE REQUIRED

ALPHATRON MARINE CAN OFFER THE ALPHASEAPILOT MFA IS TO BE USED:

- NO LIMIT IN THE VESSEL'S SIZE;
- MAIN STEERING SYSTEM;
- DUAL INDEPENDENT RUDDERS;
- LARGER DISPLAY



The human touch in technology

# ALPHALINE TILLERS



ALPHAWHEEL

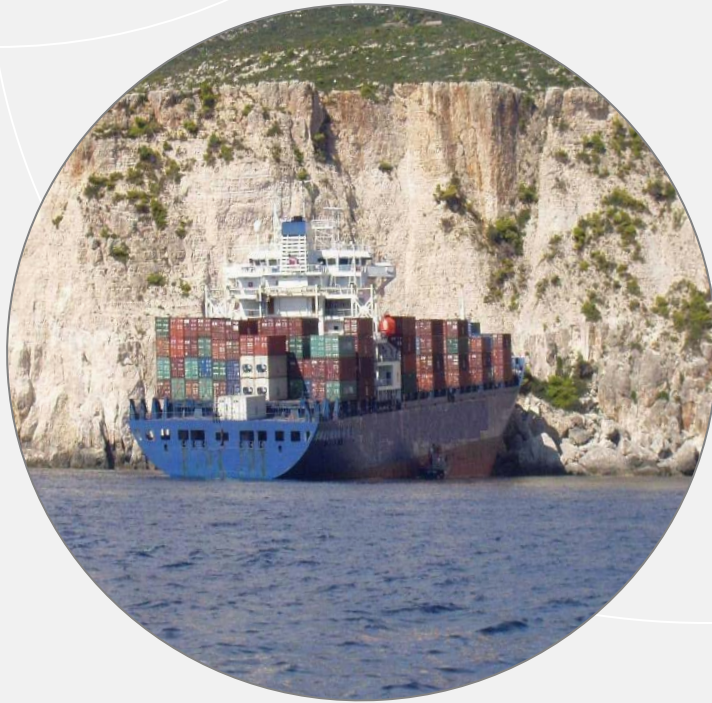
ALPHATILLER NFU ALPHATILLER NFU STEERING MODE  
SELECTION SWITCH



The human touch in technology

# ALPHABNWAS

BRIDGE NAVIGATIONAL WATCH ALARM  
SYSTEM, COMPLIANT TO THE NEW  
REGULATIONS PER 2011



**ALPHATRON**  
marine

The human touch in technology

# ALPHABINNACLE

HISTORICAL TECHNOLOGY INTO A STATE OF THE ART DESIGN, ALPHATRON'S MAGNETIC COMPASSES, AVAILABLE FOR VESSELS ABOVE AND UNDER 150GT ARE TYPE APPROVED ACCORDING TO THE EUROPEAN MARINE EQUIPMENT DIRECTIVE (MED).



**ALPHATRON**  
marine

The human touch in technology

# ALPHABRIDGE

THE ALPHABRIDGE IS A INNOVATIVE AND MODULAR BRIDGE CONSOLE CONCEPT,  
DESIGNED BY ALPHATRON MARINE

IN THE ALPHABRIDGE CONCEPT, THE ALPHALINE MF AND CONTROL PANELS ARE AVAILABLE TO COMPOSE AN ERGONOMICALLY STATE OF THE ART LAY-OUT AND COLOUR SCHEME:

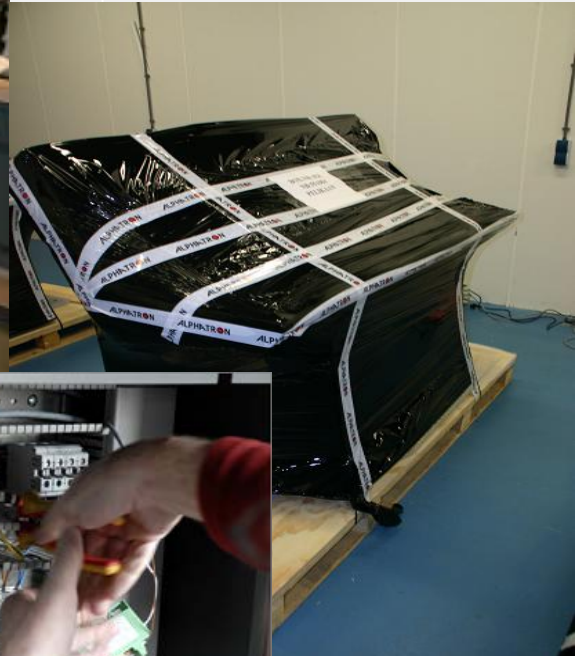


**ALPHATRON**  
marine



# ALPHABRIDGE

- COMPLETE PRE-ASSEMBLY IN OUR WORKSHOPS
- FAT BEFORE SHIPMENT TO ANY SHIPYARD ANYWHERE IN THE WORLD.





ALPHABRIDGE

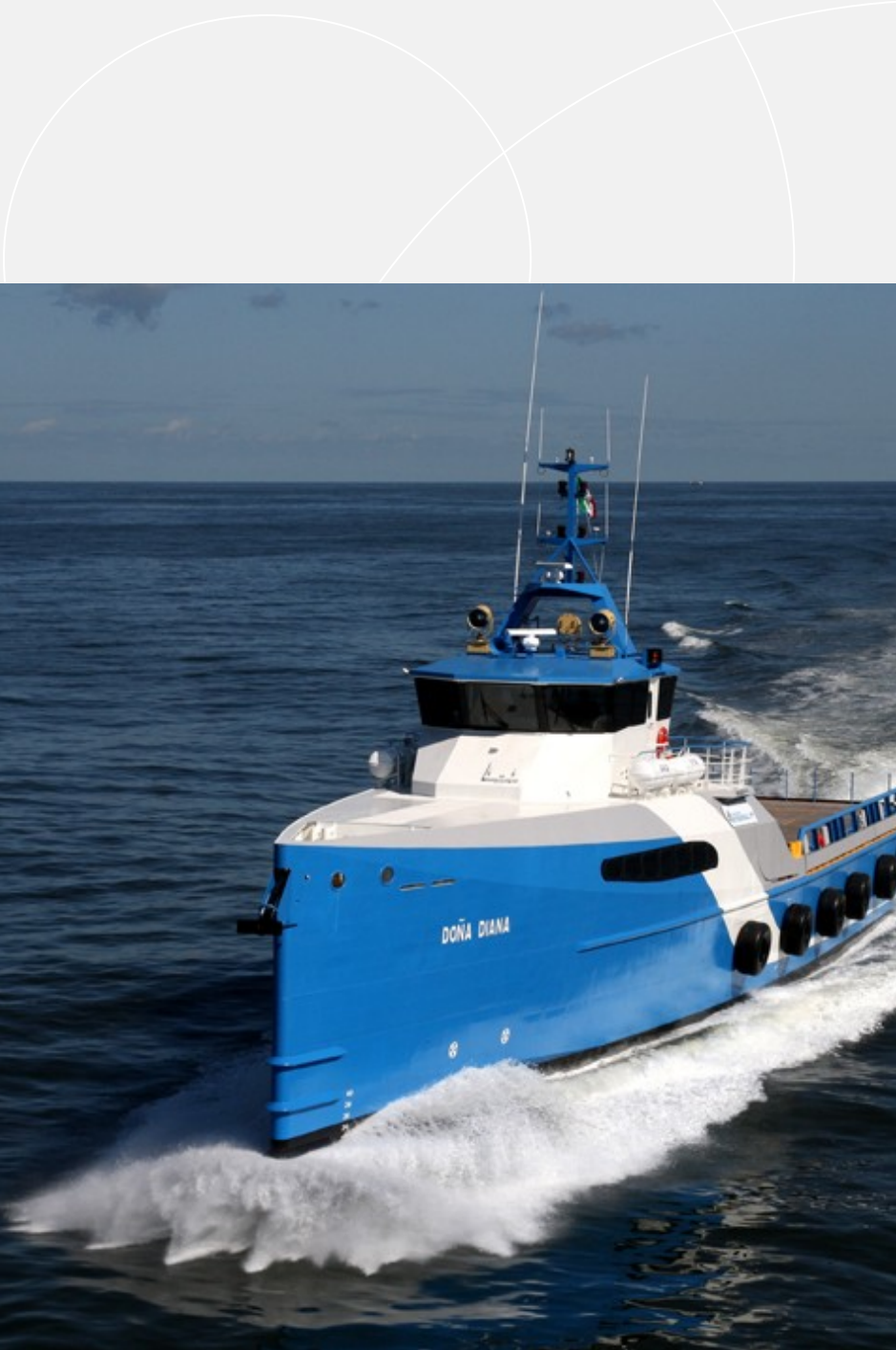
ALPHACOMMAND CHAIR



ALPHATRON







**ALPHATRON**  
marine





**ALPHATRON**  
Alphatron Marine BV







The human touch in technology



**ALPHATRON**  
marine







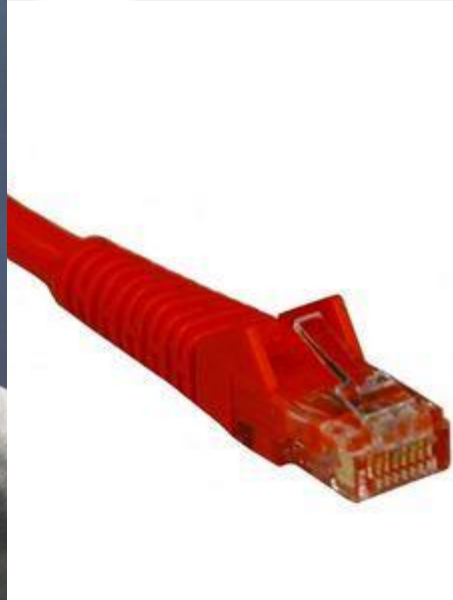
# ALPHATRON IT & AV SOLUTIONS

MARITIME AND LAND BASED IT SOLUTIONS;

- (VIRTUAL) LAN NETWORKS
- WAN NETWORKS
- FIBRE AND ISCSI STORAGE SOLUTIONS
- SAT COMMS BONDING
- INTERNET ACCESS MANAGEMENT
- WAN OPTIMIZATION
- VIDEO SWITCHING
- VIDEO CONFERENCING









The human touch in technology

# ALPHATRON IT & AV SOLUTIONS

## MARITIME AV SOLUTIONS

- IP ENTERTAINMENT (OVER LAN)
- CABIN ENTERTAINMENT SYSTEM
- PERSONAL ENTERTAINMENT SYSTEM





The human touch in technology

*Alphatainment*

**Cabin Entertainment System**

**ALPHATRON**  
marine

# ALPHATRON IT & AV SOLUTIONS

- IPTV
- SATELLITE RADIO
- VIDEO ON DEMAND (VOD)
- INFORMATION CHANNELS
- INTERFACING TO PA SYSTEM
- INTERFACING WITH CCTV SYSTEM
- SAFETY INSTRUCTION VIDEO
- COMPACT
- INTUITIVE CONTROL VIA SINGLE REMOTE CONTROL
- COMMON HARDWARE FOR REAL WORLDWIDE SUPPORT
- REMOTE DIAGNOSTICS AND SERVICE



# *Alphatainment*

- TV
- Movies
- Radio
- Information
- TV Guide
- Language
- Change Theme



*Alphatainment*

**ALPHATRON**  
marine