

Raymarine®

HD DIGITAL™

HD Digital Sounder Modules

For Raymarine
Multifunction Displays

DSM30

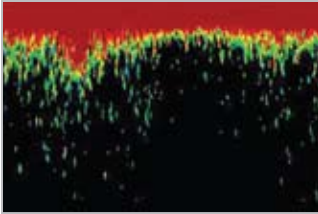
DSM300

DSM400



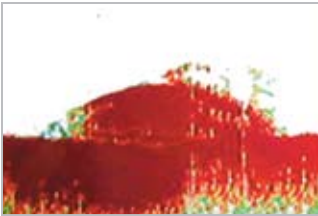
HD DIGITAL™

THE HD DIGITAL DIFFERENCE



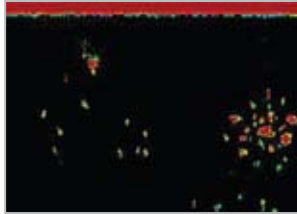
ANALOG

Fixed bandwidth analog fishfinders exhibit surface clutter from turbulence and their own transmit signal



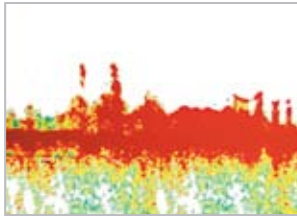
ANALOG

The analog fishfinder "sees" the wreck, but the image lacks detail



HD DIGITAL

HD Digital fishfinder technology eliminates surface clutter and reveals more fish



HD DIGITAL

Raymarine HD Digital fishfinder brings the wreck into clear focus.

FISHFINDER FEATURES

- Raymarine's patented HD Digital fishfinder technology using a remotely mounted Digital Sounder Module
- Hands-free HD Digital technology automatically adjusts more than 220 sonar parameters per second and virtually eliminates clutter
- HD Digital adaptive receiver technology precisely targets fish and bottom structure with amazing clarity
- Bottom lock, A-Scope and Zoom modes
- Four fishfinder presets for one touch access to your favorite views of split screen, frequency, zoom, bottom lock and more
- Fully automatic "hands off" operation for a dramatically clearer picture
- Full range of high and ultra high performance transducers available

HD DIGITAL™

DIGITAL SOUNDER MODULES

Raymarine Digital Sounder Modules bring the benefits of Raymarine's award winning HD Digital fish finding technology to the C-Series, C-Series Widescreen, E-Series, and G-Series Multifunction Navigation Systems.

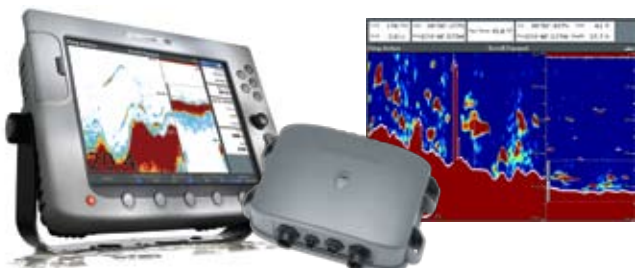
DSM30

The DSM30 Digital Sounder Module adds HD Digital technology to Raymarine C-Series, C-Series Widescreen, and E-Series multifunction displays. Featuring patented Raymarine HD Digital sounder technology, dual frequency (50/200kHz) and 600 Watt operation.



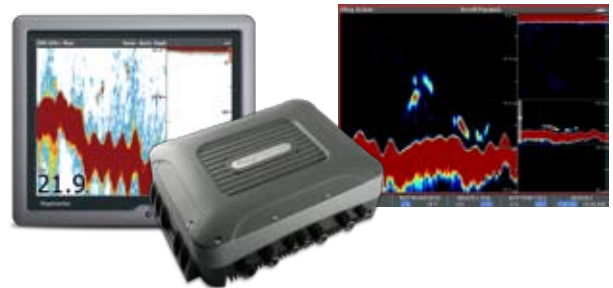
DSM300

The DSM300 is the perfect choice for the experienced offshore angler. Boasting up to 1000 watts of output power (depending on choice of transducer) the DSM300 Digital Sounder Module adds HD Digital technology to Raymarine C-Series, C-Series Widescreen, E-Series, and G-Series navigation systems. Featuring patented Raymarine HD Digital sounder technology and dual frequency (50/200kHz) operation.



DSM400

As the ultimate weapon in the hunt for fish, the DSM400 delivers the power and performance serious offshore anglers demand. Operating at 1, 2 or a mighty 3 kilowatts of transmitting power, the DSM400 takes our patented HD Digital technology to a whole new level. The DSM400 supports dual depth transducers and 28, 38, 50, 185 and 200 kHz frequencies. This premium digital sounder module is compatible with E-Series and G-Series Systems



TARGET FISH

Thanks to HD Digital technology, experienced anglers can easily identify individual species of fish and their habitat at a glance. The adaptive digital receiver of the digital sounder module enables anglers to easily distinguish bait fish from larger species. When combined with the G-Series display, bottom structure and target detail are delivered in native resolutions up to 1280 x 1024 pixels.

FULLY AUTOMATIC

Enjoy truly hands-free operation with the digital sounder module. Adaptive HD Digital technology automatically adjusts sonar parameters to changing sea conditions, virtually eliminating clutter and precisely targeting fish and bottom structure with unprecedented clarity. The digital sounder module also provides auto adaptive control of sensitivity, ping rate and transmit power.

TRANSDUCERS

Installing the right transducer is vital to getting the most out of your digital sounder module. Raymarine offers a range of transducers designed for a variety of vessel types and performance requirements. For more information on choosing a transducer please visit www.raymarine.com or talk to your local authorized Raymarine dealer.



Transom Mount



In Hull



Low profile thru hulls



Thru-hulls with depth, speed and temp sensors and high speed fairings



Ultra High Performance Urethane Thru-Hull



Ultra High Performance In Hull



Tilted Element

HIGH PERFORMANCE TRANSDUCERS

For maximum performance a wide range of professional grade transducers are available for the DSM400. Choose external mount or high performance in-hull transducers. In-hull transducers help eliminate cavitation and turbulence for improved performance at high speeds. Optional speed and temperature sensors are also available.



High Performance In Hull



High Performance Through Hull



High Performance Sensors

DSM30 AND DSM300 ORDERING INFORMATION

PART #	BODY STYLE	MATERIAL	FEATURES			PERFORMANCE	MAX POWER	APPLICATIONS		
			DEPTH	SPEED	TEMP			OB POWER	IB POWER	SAIL
Transom Mount Transducers										
E66054	P66	Plastic	•	•	•	Good	600w	•	•	•
E66019	ST69	Plastic		•	•	N/A	N/A	•	•	
In-Hull Transducers										
E66008	P79	Plastic	•			Good	600w	•	•	•
A66089	M260	Urethane	•			Best	1000w	•	•	•
E66076	R199	Urethane	•			Ultimate	2000w	•	•	•
Through-hull Transducers										
A66091	B744V	Bronze	•	•	•	Good	600w	•	•	•
A66092	B744VL	Bronze	•	•	•	Good	600w	•	•	•
E66013	P319	Plastic	•			Good	600w	•	•	•
E66014	B117	Bronze	•			Good	600w	•	•	•
E66015	SS555	Stainless	•			Good	600w	•	•	•
E66082	B258	Bronze	•		•	Better	1000w		•	
A102121	SS270 Wide Beam	Stainless	•		•	Best	1000w	•	•	•
E66079	B260	Bronze	•		•	Best	1000w		•	
E66075	R99	Urethane	•		•	Ultimate	2000w		•	
E66071	P120-ST800	Plastic		•	•	N/A	N/A	•	•	•
E66072	B120-ST800	Bronze		•	•	N/A	N/A	•	•	•
Tilted Element Through-Hull Transducers										
E66085	B60-20°	Bronze	•		•	Good	600w	•	•	•
E66086	B60-12°	Bronze	•		•	Good	600w	•	•	•
A102137	B164-0°	Bronze	•		•	Better	1000w	•	•	•
A102112	B164-12°	Bronze	•		•	Better	1000w	•	•	•
A102113	B164-20°	Bronze	•		•	Better	1000w	•	•	•

DSM400 ORDERING INFORMATION

PART #	BODY STYLE	MATERIAL	FEATURES			FREQUENCY (KHz)	MAX POWER	APPLICATIONS		
			DEPTH	SPEED	TEMP			OB POWER	IB POWER	SAIL
In-Hull Transducers										
A102115	R299	Urethane	•			38/50/200	3000w	•	•	•
A102117	R399	Urethane	•			28/38/200	3000w	•	•	•
Through-hull Transducers										
A102114	R209	Urethane	•		•	38/50/200	3000w	•	•	•
A102116	R309	Urethane	•		•	28/38/200	3000w	•	•	•
A102118	SS270 Wide Beam	Stainless	•		•	50/200	1000w	•	•	•
A102119	CS4500	Bronze		•		N/A	N/A	•	•	•
A102120	T42	Bronze			•	N/A	N/A	•	•	•

DIGITAL SOUNDER MODULE SYSTEM DIAGRAM



DIMENSIONS

DSM400



DSM300/DSM30



DIGITAL SOUNDER MODULE SPECIFICATIONS

	DSM30 Digital Sounder Module	DSM300 Digital Sounder Module	DSM400 Digital Sounder Module
PHYSICAL			
Overall Dimensions	10.76" x 7.37" x 2.43"	10.76" x 7.37" x 2.43"	16.37" x 4.92" x 12.09"
Product Weight lbs (kg)	2.2 (1.0)	2.2 (1.0)	27 lbs (12.25 kg)
POWER			
Nominal Voltage (volts DC)	12v systems	12v and 24V systems	12v and 24V systems
Absolute voltage range (volts DC)	10.8 -18 volts	10.7-32 volts	10.7-32 volts
Power consumption (typical) watts	18W	30W	96W
ENVIRONMENTAL			
Temperature range	-10°C to +50°C Operating -20°C to +70°C Non-operating	-10°C to +50°C Operating -20°C to +70°C Non-operating	-10°C to +50°C Operating -20°C to +70°C Non-operating
Humidity	Up to 95%	Up to 95%	Up to 95% at 35°C non-condensing
Waterproofing standard	CFR46 and IPX6	CFR46 and IPX6	IPX7
KEY FEATURES			
Nominal Power Output (watts RMS)	600 watts	1000 or 600 watts (depends on transducer type)	1, 2, 3 kW (depends on transducer type)
Frequency	Dual 200 kHz/50 kHz	Dual 200 kHz/50 kHz	28, 38, 50, 185, 200 KHz

DSM ORDERING INFORMATION

PART #	DESCRIPTION
E63074	DSM30 600 Watt Digital Sounder Module
E63069G	DSM300 1000 Watt Digital Sounder Module
E63072	DSM400 3000 Watt Digital Sounder Module
E66009	DSM30/DSM300 Transducer Extension Cable (10ft)
E66010	DSM30/DSM300 Transducer Extension Cable (16ft)

Raymarine®

Raymarine Inc.
21 Manchester Street
Merrimack, NH 03054
USA
Tel: 603.881.5200
Fax: 603.864.4756
www.raymarine.com

Raymarine plc
Anchorage Park
Portsmouth, Hampshire PO3 5TD
United Kingdom
Tel: +44 (0)23 9269 3611
Fax: +44 (0)23 9269 4642
www.raymarine.com

Additional information, specifications and interactive product tours available online at www.raymarine.com



Product specifications subject to change without notice